

PRINTABLE FABRIC BASE CLOTHS

Sourced specifically for the architecture, design and furnishing industry, our high quality fabrics are printed using the dye sublimation method ensuring long lasting print results . All of our print products fulfil the strenuous demands of the commercial design market. Meeting industry standards our base cloths, printed in Australia, are certified for flammability, abrasion and cleaning.

POLLOCK

GO TO CONTRACT UPHOLSTERY OPTION WITH A MEDIUM WEAVE TEXTURE

COMPOSITION: 100% Polyester
BASE CLOTH WIDTH: 140cm
PRINTED WIDTH: varies per design
PATTERN REPEAT: varies per design
APPLICATION: Upholstery, Drapery, Accessories,
Bedheads
FLAME RETARDANCY: AS/NZS 1530.3
PILLING RESISTANCE: 5
ABRASION: 48500 cycles Martindale
WEIGHT: 334gsm

CARE & CLEANING:

- Vacuum regularly using low suction
- Protect from sunlight
- Clean with hot water extraction machine
- Professional cleaning recommended
- Dry in shade far from heat and allow to dry thoroughly before use
- Use only upholstery detergent
- Treat spills and stains as soon as possible
- Gently scrape any soil or mop any liquid from surface
- Apply cleaning agents strictly according to instructions
- May be spot cleaned with dry cleaning solvent
- Annual professional cleaning recommended
- Pilling can occur regularly as a result of normal daily wear and should not be considered as a fault. Fibre pills can be removed by a battery operated pilling tool available from haberdashery stores



SEE ALL PRINT PATTERNS: <https://emilyziz.com/print-catalogue>

MIRO

TEXTURED, COTTON FEEL BASE CLOTH

COMPOSITION: 100% Polyester
BASE CLOTH WIDTH: 140cm
PRINTED WIDTH: varies per design
PATTERN REPEAT: varies per design
APPLICATION: Upholstery, Drapery, Accessories,
Bedheads, Bedspreads
FLAME RETARDANCY: AS/NZS 1530.3
ABRASION: 100 000 cycles Martindale
ADDITIONAL FEATURES: Antimicrobial, Water
and Soil Repellent finish

CARE & CLEANING:

- Remove hooks if applicable
- Warm wash
- Tumble dry at moderate temperature, ramping down to cool
- Moderate Iron
- Dry Clean
- Possible shrinkage 3%
- Do not wash with other articles

MAINTENANCE:

- Protect from sunlight & vacuum regularly ·
- Blot off liquid soiling ·
- Remove bulky matter with a flat blade ·
- Brush off/vacuum loose particles ·
- Prepare a neutral pH detergent solution (10:450ml)
- Gently rub the solution onto the soiled area with a soft brush
- Rinse detergent off with clean water and a soft white cloth & allow to air dry ·
- For stubborn stains a mild solution of Isopropyl Alcohol may be used - then repeat steps 1-7 ·
- Do not use solvent based cleaners & ensure all detergent residue is completely rinsed off



SEE ALL PRINT PATTERNS: <https://emilyziz.com/print-catalogue>

CEZANNE

LIGHT WEIGHT CHENILLE BASE CLOTH

COMPOSITION: 100% Polyester
BASE CLOTH WIDTH: 137cm
PRINTED WIDTH: varies per design
PATTERN REPEAT: varies per design
APPLICATION: Upholstery, Drapery, Accessories,
Bedheads, Bedspreads
FLAME RETARDANCY: AS/NZS 1530 pt 2 & 3
ABRASION: 50 000 rubs Martindale

CARE & CLEANING:

- Remove hooks if applicable
- Warm wash
- Tumble dry at moderate temperature, ramping down to cool
- Moderate Iron
- Dry Clean
- Possible shrinkage 3%
- Do not wash with other articles

MAINTENANCE:

- Protect from sunlight & vacuum regularly
- Blot off liquid soiling
- Remove bulky matter with a flat blade
- Brush off/vacuum loose particles
- Prepare a neutral pH detergent solution (10:450ml)
- Gently rub the solution onto the soiled area with a soft brush
- Rinse detergent off with clean water and a soft white cloth & allow to air dry
- For stubborn stains a mild solution of Isopropyl Alcohol may be used - then repeat steps 1-7
- Do not use solvent based cleaners & ensure all detergent residue is completely rinsed off



SEE ALL PRINT PATTERNS: <https://emilyziz.com/print-catalogue>

VAN GOGH

VELVET BASE CLOTH

COMPOSITION: 100% Polyester
BASE CLOTH WIDTH: 137cm
PRINTED WIDTH: varies per design
PATTERN REPEAT: varies per design
APPLICATION: Upholstery, Accessories,
FLAME RETARDANCY: AS/NZS 1530 pt 2 & 3
ABRASION: 150 000 rubs Martindale

CARE & CLEANING:

Regular care:

- Vacuum regularly using low suction
- Rotate reversible cushions regularly
- Protect from direct sunlight

Cleaning:

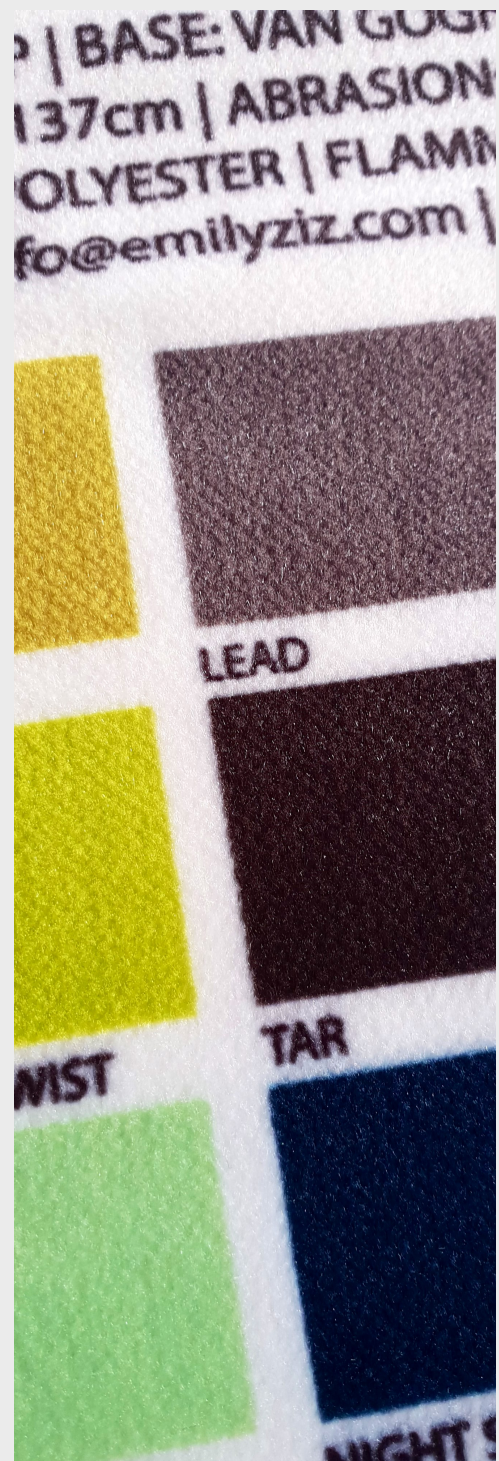
Do not remove cushion covers for separate cleaning or washing, even though they may have zippers. Shampoo clean using upholstery shampoo. Do not use dishwashing or laundry detergents. Do not wet filling. Do not scrub with a stiff brush. Gently vacuum to restore pile. Dry in shade away from direct heat. Allow to dry thoroughly before re-use

or

Clean with hot-water extraction machine (hot). Professional cleaning recommended. Use only upholstery detergent. Do not wet filling. Gently vacuum to restore pile. Dry in shade away from direct heat. Allow to dry thoroughly before use.

Spot Cleaning:

Treat spills and stains as soon as possible. Gently scrape any soil or mop any liquid from the surface of the fabric, apply proprietary cleaning agents strictly according to instructions to remove the residue of the spill. Do not saturate the fabric or interior with water or other cleaning liquids. May be spot cleaned with dry cleaning solvent.



SEE ALL PRINT PATTERNS: <https://emilyziz.com/print-catalogue>

CAMPBELL

A TEXTURED NATURAL COLOUR/ LINEN COLOUR BASE CLOTH

COMPOSITION: 100% Polyester
BASE CLOTH WIDTH: 140cm
PRINTED WIDTH: varies per design
PATTERN REPEAT: varies per design
APPLICATION: Upholstery, Accessories,
FLAME RETARDANCY: AS/NZS 1530.3
ABRASION: 160 000 rubs Martindale

CARE & CLEANING:

Regular care:

- Vacuum regularly using low suction
- Rotate reversible cushions regularly
- Protect from direct sunlight

Fixed Cover Cleaning

Clean with hot-water extraction machine (hot).
Professional cleaning recommended. Use only upholstery detergent. Do not wet filling. Dry in shade away from direct heat. Allow to dry thoroughly before re-use; or Shampoo clean using upholstery shampoo. Do not use dishwashing detergent. Do not wet filling. Do not scrub with a stiff brush. Dry in shade away from direct heat. Allow to dry thoroughly before re-use.

or

Washing Instructions (for Slip Wash Covers only)

If your covers are too bulky for your machine we recommend professional washing by your local laundry, followed by professional laundry tumble drying on warm setting. Use a gentle cycle and do not wash the fabric at a temperature exceeding 40 degrees. Use a washing agent that does not contain optical brighteners and which is suitable for colour retention such as Earth Choice (3 X Ultra concentrate liquid), or Eco Store Laundry Powder or Omo Colour. Dry cleaning is possible if preferred, but some colour variation may occur if cushions are cleaned separately from the main covers. PLEASE CONTACT EMILY ZIZ FOR FURTHER AND MORE DETAILED CLEANING INSTRUCTIONS.



QUILTY

BASE CLOTH WITH A NATURAL LINEN LOOK AND FEEL

COMPOSITION: 90% Polyester/ 10% Linen
BASE CLOTH WIDTH: 140cm
PRINTED WIDTH: varies per design
PATTERN REPEAT: varies per design
APPLICATION: Upholstery, Drapery, Accessories,
Bedheads, Bedspreads
FLAME RETARDANCY: AS/NZS 1530 pt 3
ABRASION: 50 000 double rubs Wyzenbeek
ADDITIONAL FEATURES: Antimicrobial, Water
and Soil Repellent finish

CARE & CLEANING:

- Remove hooks if applicable
- Warm wash
- Tumble dry at moderate temperature, ramping down to cool
- Moderate Iron
- Dry Clean
- Possible shrinkage 3%
- Do not wash with other articles

MAINTENANCE:

- Protect from sunlight & vacuum regularly ·
- Blot off liquid soiling ·
- Remove bulky matter with a flat blade ·
- Brush off/vacuum loose particles ·
- Prepare a neutral pH detergent solution (10:450ml)
- Gently rub the solution onto the soiled area with a soft brush
- Rinse detergent off with clean water and a soft white cloth & allow to air dry ·
- For stubborn stains a mild solution of Isopropyl Alcohol may be used - then repeat steps 1-7 ·
- Do not use solvent based cleaners & ensure all detergent residue is completely rinsed off



SEE ALL PRINT PATTERNS: <https://emilyziz.com/print-catalogue>

BROMLEY

A DURABLE AND ROBUST TWILL CONSTRUCTION BASE CLOTH

COMPOSITION: 100% Polyester
BASE CLOTH WIDTH: 145cm
PRINTED WIDTH: varies per design
PATTERN REPEAT: varies per design
APPLICATION: Upholstery, Drapery, Bedspreads,
Accessories
FLAME RETARDANCY: AS/NZS 3837
ABRASION: 161250 rubs Wyzenbeek

CARE & CLEANING:

- Remove hooks if applicable
- Warm wash
- Tumble dry at moderate temperature, ramping down to cool
- Moderate Iron
- Dry Clean
- Possible shrinkage 3%
- Do not wash with other articles



SEE ALL PRINT PATTERNS: <https://emilyziz.com/print-catalogue>

ANDY

A DURABLE LIGHT NATURAL COLOUR VELVET BASE CLOTH WITH A WATERPROOF BACKING

COMPOSITION: 100% Polyester with
Waterproof Backing

BASE CLOTH WIDTH: 137cm

PRINTED WIDTH: varies per design

PATTERN REPEAT: varies per design

APPLICATION: Waterproof Upholstery,
Accessories, Bedheads

FLAME RETARDANCY: AS/NZS 1530 pt 3

ABRASION: 100 000 double rubs Wyzenbeek

ADDITIONAL FEATURES: Antimicrobial, Water
and Soil Repellent finish

SUSTAINABILITY: PFAS-Free, GREENGUARD
Gold Certified

SUSTAINABILITY:

- Third-party GREENGUARD GOLD Certified
- ANSI/ NSF 336 - US sustainability standard
- No Halogenated Flame Retardants
- Is not bio-accumulative or toxic
- Does not require CA Proposition 65 warning label
- Does not contribute to environmental pollution - Free of PFCs and PFASs of concern
- Free of PFOS, PFOA, heavy metals, phenols, phthalates, and odour and skin sensitisers
- Can be recycled

CARE & CLEANING:

- Protect from sunlight and vacuum regularly
- Blot off liquid soiling
- Remove bulky matter with a flat blade
- Brush off/ vacuum loose particles
- Prepare a neutral PH detergent solution (10:450ml)
- Gently rub the solution onto the soiled area with a soft brush
- Rinse detergent off with lean water and a soft white cloth and allow air to dry
- For stubborn stains a mild solution of Isopropyl Alcohol may be used - then repeat steps 1-7
- This product is bleach cleanable (1:10 bleach to water)
- Do not use solvent based cleaners and ensure all detergent residue is completely rinsed off



SEE ALL PRINT PATTERNS: <https://emilyziz.com/print-catalogue>

BONNARD

A COARSELY TEXTURED BASE CLOTH WITH A WATERPROOF BACKING

COMPOSITION: 100% Polyester with waterproof backing

BASE CLOTH WIDTH: 145cm

PRINTED WIDTH: varies per design

PATTERN REPEAT: varies per design

APPLICATION: Waterproof Upholstery, Accessories, Bedheads

FLAME RETARDANCY: AS/NZS 1530 pt 3

ABRASION: 61 000 rubs Martindale

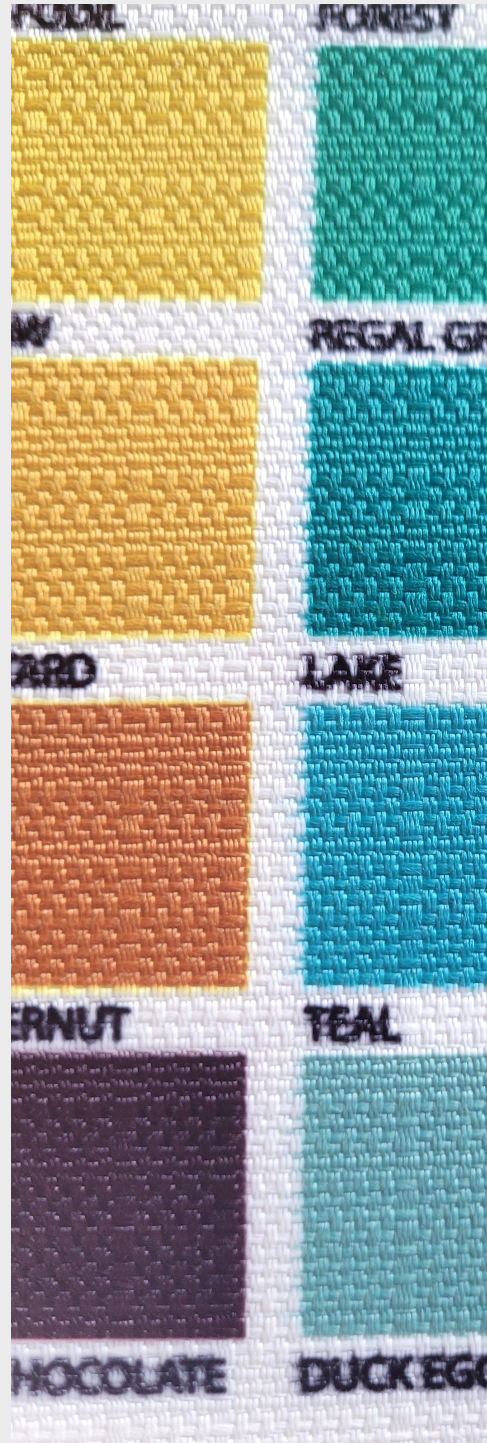
SUSTAINABILITY: OEKO-TEX Certified

ADDITIONAL FEATURES: Antimicrobial, Water and Soil Repellent finish

MANUFACTURING FEATURE: Australian Made

CARE & CLEANING:

- Protect from sunlight and vacuum regularly
- Blot off liquid soiling
- Remove bulky matter with a flat blade
- Brush off/ vacuum loose particles
- Prepare a neutral PH detergent solution (10:450ml)
- Gently rub the solution onto the soiled area with a soft brush
- Rinse detergent off with lean water and a soft white cloth and allow air to dry
- For stubborn stains a mild solution of Isopropyl Alcohol may be used - then repeat steps 1-7
- This product is bleach cleanable (1:10 bleach to water)
- Do not use solvent based cleaners and ensure all detergent residue is completely rinsed off



SEE ALL PRINT PATTERNS: <https://emilyziz.com/print-catalogue>

LEONARDO

A SATIN CONSTRUCTION BASE CLOTH USED AS A LIGHT REDUCTION DRAPERY
APPROXIMATELY 99.6% LIGHT REDUCTION WITH ADDED ACOUSTIC PROPERTIES

COMPOSITION: 100% Polyester
BASE CLOTH WIDTH: 152cm
PRINTED WIDTH: varies per design
PATTERN REPEAT: varies per design
APPLICATION: Acoustic Light Reduction Drapery,
Drapery, Light Reduction Drapery
FLAME RETARDANCY: AS/NZS 1530 pt 2 & 3 -
Part 2 test with a flammability rating of 9
This is not a total blackout fabric.

NRC RATING: 0.59

SUITABLE FOR DOUBLE SIDED PRINTING

CARE & CLEANING:

- Remove hooks if applicable
- Warm wash
- Tumble dry at moderate temperature, ramping down to cool
- Moderate Iron
- Dry Clean
- Possible shrinkage 3%
- Do not wash with other articles



SEE ALL PRINT PATTERNS: <https://emilyziz.com/print-catalogue>

NOLAN

A BASE CLOTH WITH A SLIGHT SHEEN
100% BLOCKOUT WITH A LOVELY DRAPE AND HANDLE

COMPOSITION: 100% Polyester
BASE CLOTH WIDTH: 145cm
PRINTED WIDTH: varies per design
PATTERN REPEAT: varies per design
APPLICATION: Drapery, Drapery, Light Reduction
Drapery
FLAME RETARDANCY: AS/NZS 1530 pt 2

CARE & CLEANING - COATED DRAPERY &
MACHINE WASHABLE:

- Dry Cleanable
- When machine washing, use cold water on a gentle cycle
- Do nots pin dry, do not tumble dry, do not wring dry
- For best results hand wash in warm water (no warmer than 30 degrees celsius)
- Once washing is complete product needs to be pulled flat gently and immediately making sure that no coating is allowed to dry in contact with itself or the coating may stick
- Store goods at temperature above 15 degrees Celsius for 24 hours prior to processing
- When hanging, vacuum regularly with a brush attachment
- The products are designed to be cleaned 3 - 4 times in their lifetime, cleaning more than that or cleaning outside recommended settings may cause the coating to stick and be subsequently damaged



SEE ALL PRINT PATTERNS: <https://emilyziz.com/print-catalogue>

FRIDA

A TEXTURED SHEER BASE CLOTH WITH A NATURAL COTTON FEEL

COMPOSITION: 100% Polyester
 BASE CLOTH WIDTH: 147cm
 PRINTED WIDTH: varies per design
 PATTERN REPEAT: varies per design
 APPLICATION: Drapery, Sheer Drapery,
 FLAME RETARDANCY: AS/NZS 1530 pt 2

CARE & CLEANING:

- Remove hooks if applicable
- Warm wash
- Tumble dry at moderate temperature, ramping down to cool
- Moderate Iron
- Dry Clean
- Possible shrinkage 3%
- Do not wash with other articles



SEE ALL PRINT PATTERNS: <https://emilyziz.com/print-catalogue>

DALTON

A SMOOTH SHEER BASE CLOTH WITH A SATIN SHEEN
SUITABLE FOR CEILING FLAGS, BANNERS, LIGHT BOXES AND RETAIL DISPLAYS

COMPOSITION: 100% Polyester
BASE CLOTH WIDTH: Various options
PRINTED WIDTH: varies per design
PATTERN REPEAT: varies per design
APPLICATION: Drapery, Sheer Drapery, Banners,
Ceiling Flags

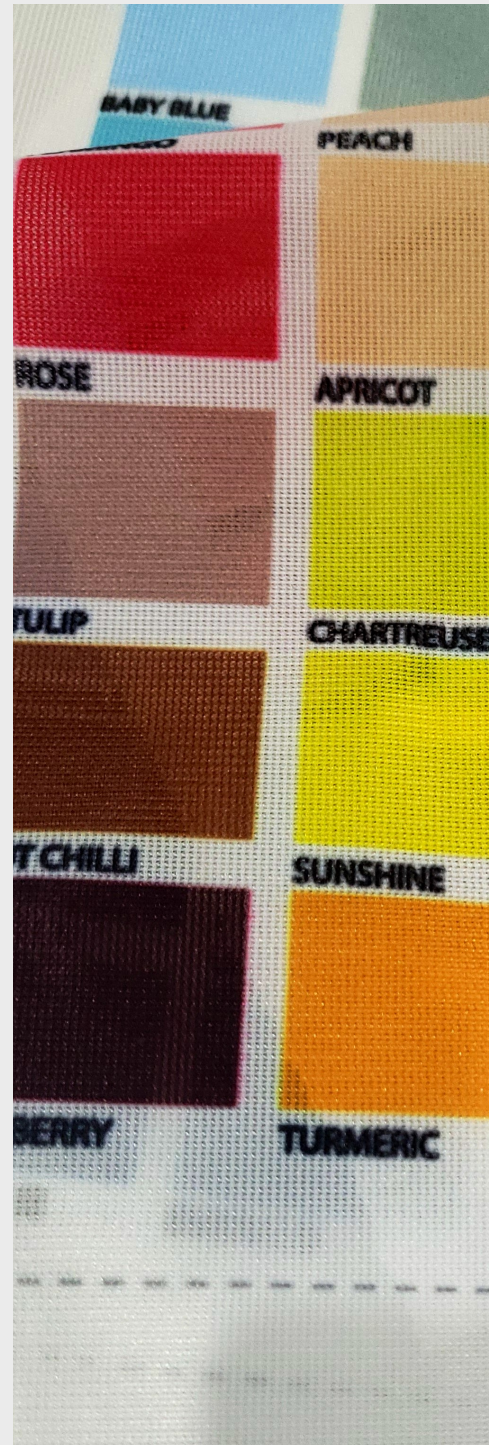


SEE ALL PRINT PATTERNS: <https://emilyziz.com/print-catalogue>

BOKOR

A TEXTURED SHEER BASE CLOTH WITH A SATIN SHEEN
SUITABLE FOR CEILING FLAGS, BANNERS, LIGHT BOXES AND RETAIL DISPLAYS

COMPOSITION: 100% Polyester
BASE CLOTH WIDTH: Various options
PRINTED WIDTH: varies per design
PATTERN REPEAT: varies per design
APPLICATION: Drapery, Sheer Drapery, Banners,
Ceiling Flags



SEE ALL PRINT PATTERNS: <https://emilyziz.com/print-catalogue>

MICHELANGELO

OFF WHITE BASE CLOTH WITH A FINE WEAVE

COMPOSITION: 100% Polyester

BASE CLOTH WIDTH: 155cm

PRINTED WIDTH: varies per design

PATTERN REPEAT: varies per design

APPLICATION: Acoustic Panels, Pinboards

FLAME RETARDANCY: AS/NZS 1530 pt 3, AS/NZS 3837, 1998 Cone Calorimeter

SUSTAINABILITY: OEKO-TEX Certified

CARE & CLEANING:

- Gently vacuum regularly with appropriate attachment
- If the fabric is subject to spillage, it should be blotted up immediately, while still wet or fresh. Use white towels or an absorbent cloth. Keep blotting and changing the absorbent material until no more of the spillage is observed.
- Warm soapy water, or upholstery shampoo can be used for any marks or stains. Pre-test all solutions on an inconspicuous area. Hold a white towel against the tested area for a few seconds and examine to make sure no colour has transferred. When using liquid cleaners work from the outer ring of the stain, toward the centre. Always rinse with clean water and blot dry to finish, as detergent residue tends to attract soiling.
- These are a general guide to cleaning acoustic panels. If in any doubt please contact a cleaning specialist. Emily Ziz can take no responsibility for damage caused by use of these suggestions.



SEE ALL PRINT PATTERNS: <https://emilyziz.com/print-catalogue>

RAINY DAYS - SHOWER CURTAIN

A PRINT COMPATIBLE SHOWER CURTAIN BASE CLOTH WITH A TEFLON FINISH

COMPOSITION: 100% Polyester with a teflon coating

BASE CLOTH WIDTH: 180cm

PRINTED WIDTH: varies per design

PATTERN REPEAT: varies per design

APPLICATION: Shower Curtain

FLAME RETARDANCY: AS/NZS 1530 pt 2 - part 2 test with a flammability rating of 10

SPECIAL FEATURE: Teflon

CARE & CLEANING:

- Remove hooks if applicable
- Warm wash
- Tumble dry at moderate temperature, ramping down to cool
- Moderate Iron
- Dry Clean
- Possible shrinkage 3%
- Do not wash with other articles



SEE ALL PRINT PATTERNS: <https://emilyziz.com/print-catalogue>

BRIGHT LIGHT - ROLLER BLIND

A TRANSLUCENT PRINTABLE ROLLER BLIND BASE CLOTH

COMPOSITION: 70% Polyester / 30% PVC
 BASE CLOTH WIDTH: 245cm or 310cm approx
 PRINTED WIDTH: varies per design
 PATTERN REPEAT: varies per design
 APPLICATION: Roller Blind
 FLAME RETARDANCY: AS/NZS 1530 pt 2
 WEIGHT: 400 g/m2

CARE & CLEANING:

- Dust regularly
- Do not ash
- Do not dry clean
- Spot clean using mild detergent, clean water and a soft white cloth
- Rinse with clean water and pat dry
- Do not scrub
- Ensure all detergent residue is completely rinsed off



SEE ALL PRINT PATTERNS: <https://emilyziz.com/print-catalogue>

NIGHT FALL - ROLLER BLIND

A BLOCK OUT PRINTABLE ROLLER BLIND BASE CLOTH

COMPOSITION: 100% Polyester / 30% PVC
 BASE CLOTH WIDTH: 245cm or 310cm approx
 PRINTED WIDTH: varies per design
 PATTERN REPEAT: varies per design
 APPLICATION: Roller Blind
 FLAME RETARDANCY: AS/NZS 1530 pt 2
 WEIGHT: 420 g/m2

CARE & CLEANING:

- Dust regularly
- Do not ash
- Do not dry clean
- Spot clean using mild detergent, clean water and a soft white cloth
- Rinse with clean water and pat dry
- Do not scrub
- Ensure all detergent residue is completely rinsed off



SEE ALL PRINT PATTERNS: <https://emilyziz.com/print-catalogue>

